

# Landscape & Garden Calendar



*We speak green.*

ENGLED   
ESTATES



# WINTER:

## ■ December

- Complete holiday lighting and decoration installation
- Christmas tree delivery and setup completed by December 13th
- Sit back, relax, reflect and start planning for next year by getting one of Landscape Designers involved... the early bird gets the great looking landscape!

## ■ January

- Remove holiday lights, decorations, and Christmas tree
- Dormant pruning (do not prune spring flowering shrubs and trees as their buds have already developed)
- Add mulch to any bare spots in flower and plant beds
- Begin planning for your larger landscaping projects (renovated garden, walkway, patio, landscape lighting) by calling Engledow at 317-575-1100

## ■ February

- Prune fruit trees, grape vines, and berry plants (again, do not prune spring flowering shrubs and trees)
- Clean-up winter pots and winter greens
- Adjust and clean landscape lighting fixtures, change bulbs as required, and consider adding new landscape lighting features
- Secure your spring and fall landscape clean-up contract with Engledow to obtain preferred scheduling (once March hits, our schedule fills quickly)

*Get in touch with Donny Duke:*

***Engledow.com • 317-867-4811 / 317-575-1100***

***We speak green.***

**ENGLEDOW**  
*ESTATES*





# SPRING:

## ■ March

- Cut back ornamental grasses and perennials before new growth emerges
- Begin spring cleanup projects (edge beds and clean your yard and beds of leaves, twigs, and other debris)
- Prune summer-flowering shrubs before new growth emerges (i.e. Hydrangea, Roses, and Spirea) and check for disease; spray as required
- Fertilize trees and shrubs before they leaf out and apply a dormant oil spray to ornamentals susceptible to scale (ie., euonymus or crabapple)
- Transplant trees and shrubs once ground softens but while they're still in dormancy
- Apply pre-emergent weed control
- Plant spring pansies (week 3-4)
- Remove winter protection from shrubs and trees
- Freshen up beds and tree rings with a new application of mulch (do not exceed 3" of total depth)
- Finalize landscape design plans and schedule installation work

## ■ April

- Deadhead spring bulbs after bloom, leaving foliage intact
- Continue to perform spring clean-up projects as needed
- Divide and move perennials as needed
- Plant new gardens, trees, shrubs, and perennials
- Over-seed thin, weak areas of lawn and install new lawns by sodding

## ■ May

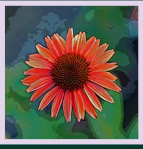
- Plant annual flowers after danger of frost (average date of last frost is May 15th) and water daily or as needed
- Fertilize shrubs and groundcover in beds
- Plant trees, shrubs, perennials, annual beds, pots, planters and containers
- Plant groundcover after May 15th
- Prune spring-flowering shrubs after flowering is complete
- Plan ahead for various hardscaping (walkway, patio, pergola, firepit) and landscape lighting projects

*Get in touch with Donny Duke:*

**Engledow.com • 317-867-4811 / 317-575-1100**

***We speak green.***

**ENGLEDOW**  
*ESTATES*



# SUMMER:

## ■ June

- Trim deciduous shrubs and prune groundcover
- Fertilize annual flowers to encourage continued blooms
- Water annual flowers daily or as needed
- Continue working on various areas of your garden and landscape by planting trees, shrubs, perennials and groundcover
- Consider adding a rain gauge to your garden to measure weekly rainfall. A minimum of one inch of rainfall per week is needed for trees, shrubs, and perennials
- During periods of drought, supplemental watering will be required to keep your landscape healthy
- Begin construction and/or installation of newly designed hardscape or landscape lighting elements

## ■ July

- Continue watering trees, shrubs, and perennials based upon weekly rain gauge measurements
- Continue watering annual flowers daily or as needed
- Prune hedges (boxwoods and yews) and spring-flowering shrubs after flowering is complete (this is a good time for hard pruning to control size and shape)
- Last chance to order fall annuals (mums, kale, cabbage, and pansies) for fall color plantings

## ■ August

- Continue watering trees, shrubs, and perennials based upon weekly rain gauge measurements
- Continue watering annual flowers daily or as needed
- Start fall lawn seeding after August 15th

*Get in touch with Donny Duke:*  
**Engledow.com • 317-867-4811 / 317-575-1100**

***We speak green.***

**ENGLEDOW**  
*ESTATES*



# FALL:

## ■ September

- Begin wrapping vulnerable tree trunks to prepare for winter
- Fertilize trees and shrubs before September 15th
- September 15th is the end of the fall lawn seeding window (dependent upon weather patterns)
- Begin removal of summer annual flowers; plant fall annuals for fall color in beds and containers
- Confirm Christmas tree order and holiday/winter décor plans with Engledow by the end of September
- Confirm spring-flowering bulb order with Engledow

## ■ October

- Finish removal of summer annuals and installation of fall annuals in both beds and containers
- Meet with an Engledow representative now to begin planning for next year's seasonal flower displays to ensure best selections of varieties, colors, and quantities
- Finalize next year's landscape maintenance schedule and contract
- Begin fall clean-up after first hard freeze
- Complete tree wrap on soft skinned plants
- Application of anti-desiccant spray on broadleaved evergreens (boxwoods, hollies, rhododendrons, and azaleas)
- Aerate your lawn
- Complete landscape installation projects (hardscape, planting, lighting) and miscellaneous projects
- Replace trees, shrubs, perennials, and groundcover if necessary ("Fall is for Planting")

## ■ November

- Complete fall clean-up activities
- Cut back perennials for winter unless they provide winter interest in which they can be cut back in early spring
- Clean out fall containers and replace with winter decorations
- Continue planting/replace trees, shrubs, perennials and groundcover
- Spring bulb planting
- Finalize plans for next year's seasonal flower displays
- Begin holiday lighting and decoration installation

*Get in touch with Donny Duke:*

***Engledow.com • 317-867-4811 / 317-575-1100***

***We speak green.***

**ENGLEDOW**  
*ESTATES*

